

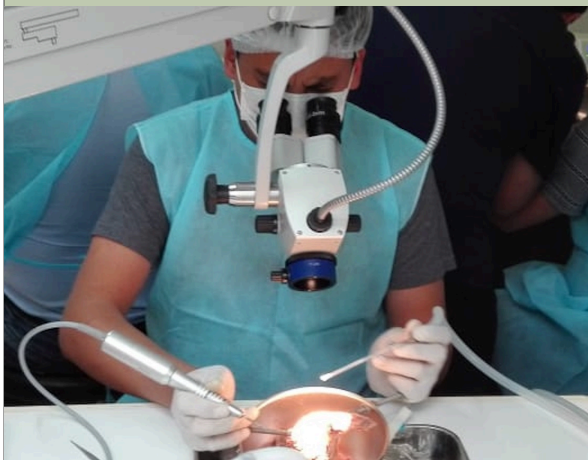
## Course Objectives

This course is designed for international residents and Otolaryngologists, although it is open to anyone with an interest in Otology.

The objectives of this course are to give a broad based exposure to general topics in Otology, so that upon completion of the course, one will have a greater comfort level with the understanding of ear disease and its management.

The laboratory sessions are designed to teach middle ear anatomy and correlate this with basic surgical approaches to ear diseases.

Didactic sessions held on the Keck-USC Medical School Campus are designed to review the basics of chronic ear disease, OCR, acoustic tumors, the role of the endoscope in ear surgery, the reading of the CT scan, and how to deal with idiopathic and iatrogenic complications.



## Course Faculty

### *COURSE DIRECTOR*

**Courtney J. C. Voelker, MD, Ph.D., FACS**  
Division Director Otology, Neurotology, Skull Base  
Director of Pediatric Cochlear Implant Program  
Keck USC School of Medicine

### *DISTINGUISHED GUEST FACULTY*

**Derald Brackmann, MD, FACS**  
Associate Professor of Otolaryngology  
Keck USC School of Medicine  
House Ear Clinic

### *KECK USC FACULTY*

**John S. Oghalai, MD, FACS**  
Chair and Professor of Otolaryngology  
Leon J. Tiber and Davis Alpert Chair in Medicine  
Keck USC School of Medicine

**Dennis Maceri, MD, FACS**  
Professor of Clinical Otolaryngology  
Keck USC School of Medicine

**Joni Doherty, MD, Ph.D., FACS**  
Associate Professor of Otolaryngology  
Keck USC School of Medicine

**John Go, MD, FACS**  
Associate Professor of Radiology  
Keck USC School of Medicine

**Richard Wagner, MD, FACS**  
Volunteer Clinical Faculty  
Keck USC School of Medicine  
Director of Global ENT Outreach

**Janet Choi, MD**  
Otolaryngology Resident Coordinator  
Keck USC School of Medicine

## USC-KECK SCHOOL OF MEDICINE

### INTERNATIONAL TEMPORAL BONE COURSE

**NOVEMBER 8-10, 2019**

Los Angeles, California USA



## Course description

### INTENDED AUDIENCE

This course is intended for Otolaryngologists and residents/fellows in training with an interest in the fundamentals of successful otologic surgery via the study of the temporal bone anatomy, disease management, and applied surgical techniques.

### COURSE OVERVIEW

After participating in this CME activity, participants should be able to describe and discuss:

- basic and applied anatomy of the temporal bone
- understand the basic use of the endoscope in otologic surgery
- approach to surgical management of ear disease
- evidence based approaches to otologic evaluation and diagnosis



## Topics to Be Presented

- Temporal bone anatomy
- Surgery of chronic ear
- Cochlear implants
- Radiology of the temporal bone
- Iatrogenic and Idiopathic complications
- Ossicular reconstruction
- Stapedectomy
- Management of acoustic tumors
- Surgery for vertigo
- Endoscopic ear surgery

## Procedures demonstrated

- Canal wall up mastoidectomy
- Canal wall down mastoidectomy
- Facial recess and extended facial recess
- Endolymphatic sac decompression
- Facial nerve identification
- Middle cranial fossa approach
- Cochlear implantation
- BAHA/SOPHONO implant techniques



## Course Location

The John Niparko Temporal Bone Lab  
(CSC 135M) First Floor of the center  
2250 Alaczar Street  
Los Angeles, CA 90033

## Course Inscription fee

Lecturers only	\$150.00
Residents/Fellows	\$575.00
Physicians in practice	\$650.00

## Contact Information

[info@geoutreach.org](mailto:info@geoutreach.org)

## Lodging

Hotel	Reservations
Super 8 Wyndham Hotel 5350 So. Huntington Dr. Los Angeles, CA 90032 +1 323-225-2310	Use code <b>Super 8 USC</b> when reserving to get special rate. <a href="#">Website link</a>

